



### Made to Measure

We appreciate your order of a Made to Measure (tailor-made) item from **ALIVE MOTO**. When placing an order for a Made-to-Measure product, it is crucial to meticulously review your measurements and adhere to our measurement guidelines and step-by-step assistance. Please be aware that our return policy does not cover Made-to-measure orders. If you encounter any fitting issues, the measurements you provided will be compared to the final product. It's important to note that the factory adds an extra 3-10cm to the dimensions, depending on the location, to ensure optimal mobility of the product.

Upon receiving your order, our specialized team will verify your size. It's worth mentioning that the product's listed price applies to body sizes up to 3XL. For larger sizes, there will be an additional charge of approximately EUR 10 for textiles and EUR 15 for leather per size increment. The precise additional cost will be determined by the **ALIVE MOTO** team after they receive your body measurements. The delivery timeframe ranges from 12 to 30 working days, depending on the seasonal workload

Please be aware that all extra fees must be paid in advance, prior to the commencement of production.

ORDERNUMBER:

NAME:

ADRESS:

POSTCODE:

CITY:

COUNTRY:

PHONE.NO:

EMAIL:


**BE SURE TO TAKE EXACT MEASUREMENTS AND NOT TO ADD EXTRA CM TO THE MEASUREMENT.**

**IN THE MANUFACTURE PROCESS WE WILL ADD 5-15 CM DEPENDING ON LAYERS OF FABRIC TO BE USED**

PRODUCTS:

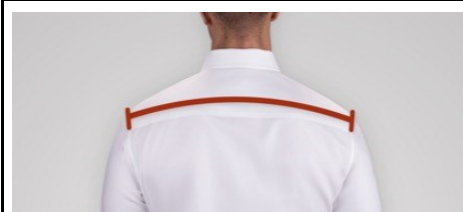
--



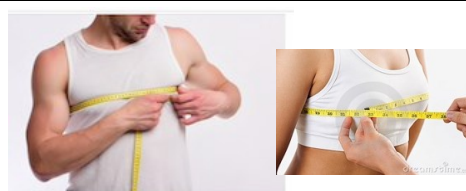
NECK / NACKE AROUND NECK (CM)



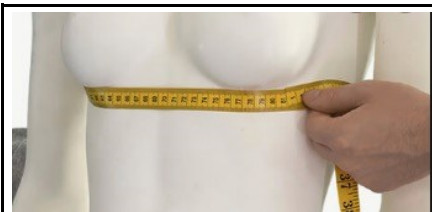
ARMPIT ARMHÅLA AROUND ARMPIT (CM)



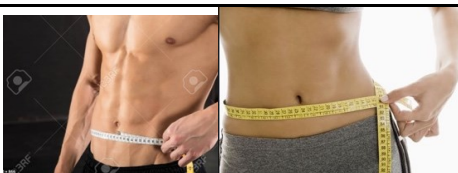
SHOULDER LENGTH AXELVIÐ (CM)



CHEST / BUST / BRÖST - AROUND CHEST (CM)



(LADY) UNDER CHEST AROUND(CM)



WAIST / MIDJA AROUND WAIST (CM)



BELT LINE UNDER STOMACH MEASURE (CM)



HIPS / STUSS AROUND HIPS (CM)



BACK LENGTH - NECK TO WAIST - (CM)

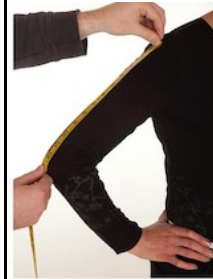




SLEEVE LENGTH



ELBOW TO WRIST



SHOULDER TO ELBOW / (CM)

/ AXEL TILL ARMBÅGE (CM)



BICEPS AROUND (CM)



ELBOW / FOREARM AROUND (CM)



WRIST / HANDLED AROUND (CM)



THIGH AROUND LÅRVIDD (CM)

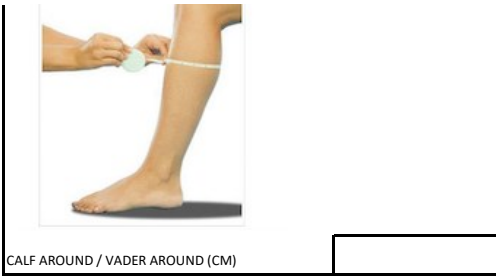


KNEE AROUND - KNÄ OMKRETS (CM)

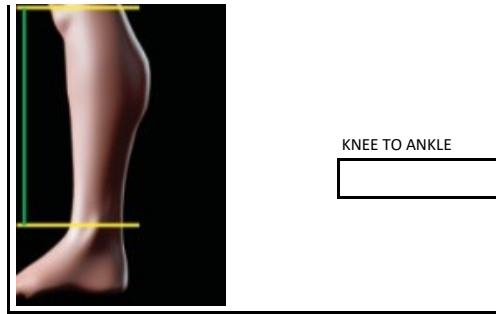


ANKLE AROUND/ (CM)

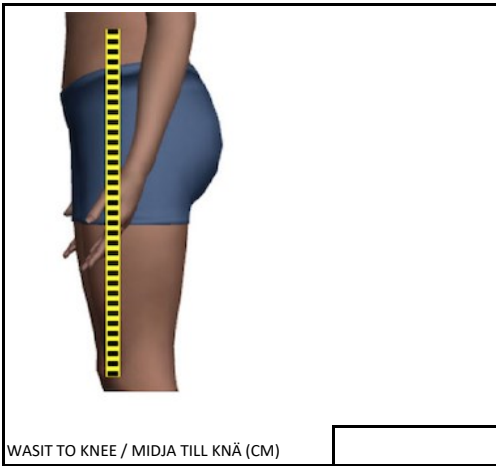




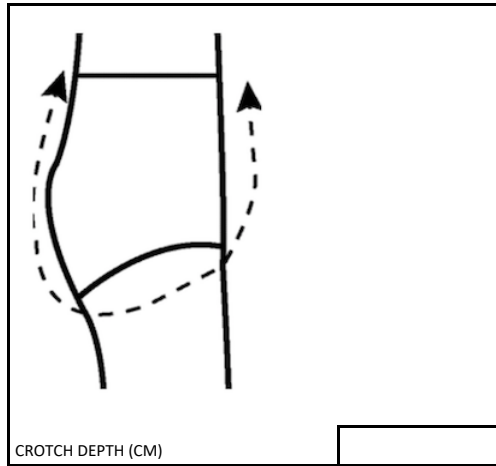
CALF AROUND / VADER AROUND (CM)



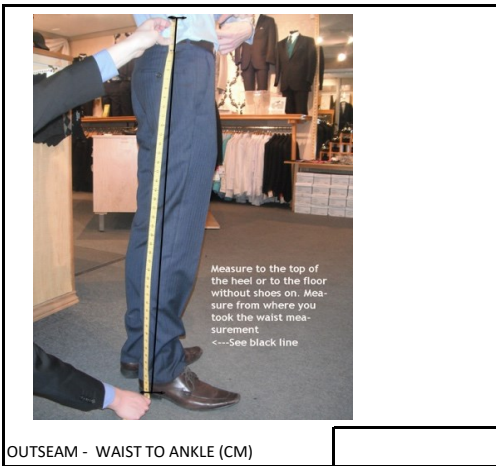
KNEE TO ANKLE



WASIT TO KNEE / MIDJA TILL KNÄ (CM)



CROTCH DEPTH (CM)

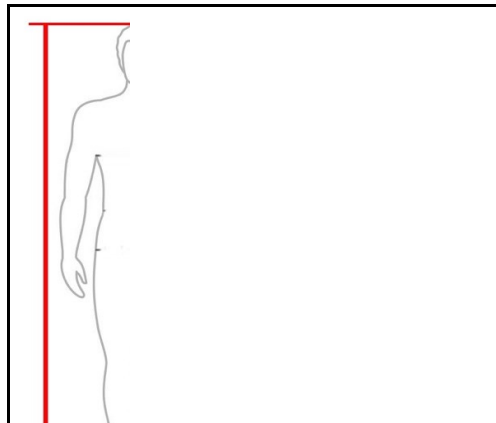
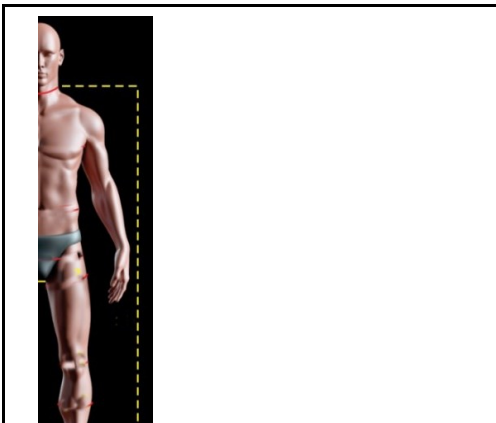


Measure to the top of the heel or to the floor without shoes on. Measure from where you took the waist measurement. <--See black line

OUTSEAM - WAIST TO ANKLE (CM)



INSEAM / INNERBENSLÄNGD (CM)



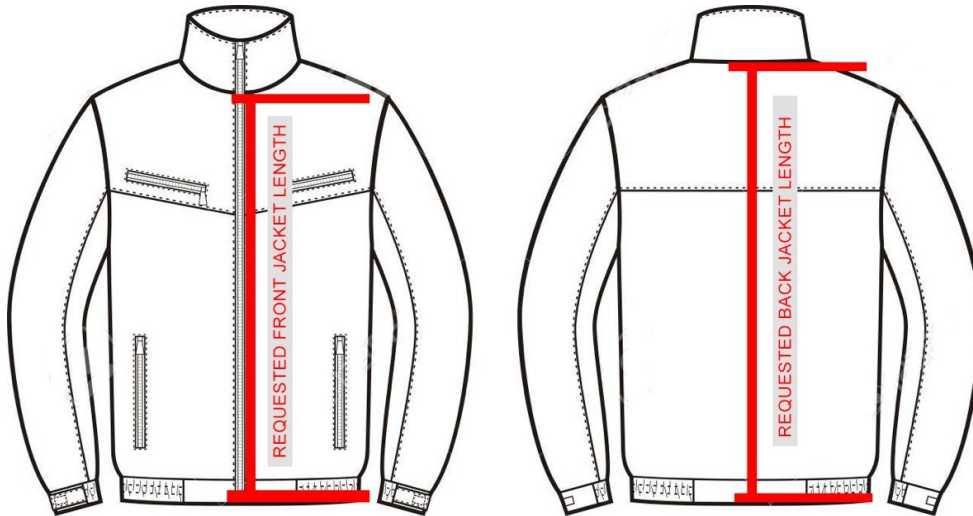


NECK TO ANKLE (CM)



TOTAL LENGTH (CM)

ATTENTION! THESE MEASURES WILL ONLY BE USED IF POSSIBLE AND WILL BE DONE ACCORDING TO THE MEASURES GIVEN ABOVE.



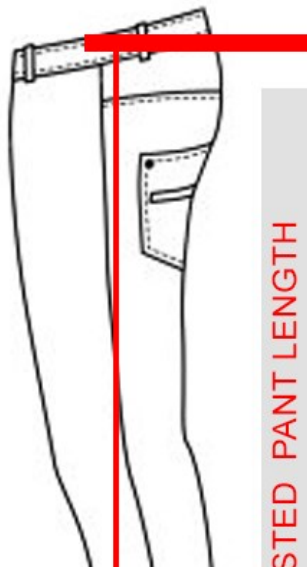
MEASURES YOU GIVE HERE WILL BE APPLIED IF POSSIBLE AND WILL BE ADJUSTED ACCORDING TO YOUR OTHER BODY MEASUREMENTS.

REQUESTED FRONT LENGTH OF JACKET (CM)

ÖNSKAD FRONT LÄNGD AV JACKAN (CM)

REQUESTED BACK LENGTH OF JACKET (CM)

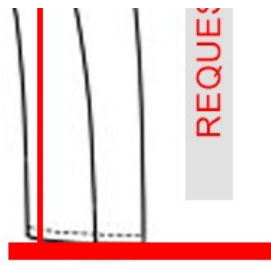
ÖNSKAD BAK LÄNGD AV JACKAN (CM)



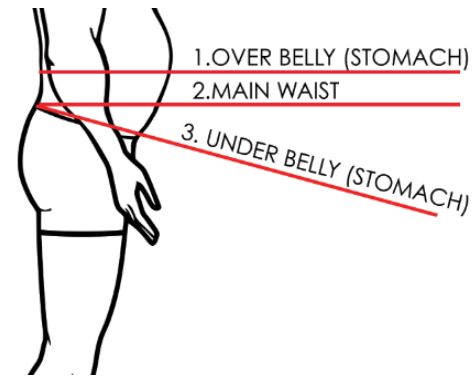
HOW DO YOU WEAR YOUR TROUSERS? MARK (X)

- 1. OVER BELLY (STOMACH)
- 2. MAIN WAIST
- 3. UNDER BELLY (STOCMACH)





REQUESTED



1. OVER BELLY (STOMACH)

2. MAIN WAIST

3. UNDER BELLY (STOMACH)

REQUESTED FRONT LENGTH OF PANT (CM)

ÖNSKAD FRONT LÄNGD AV BYXAN (CM)